

Winter 2004/2005
Issue 17

www.chelmsfordhc.org.uk

Inside this Issue

- 1 Welcome
- 2 Chairman's Chatter, Secretary's Corner
- 3 Marketing, Finance and Sponsorship (MFS) News
- 4 STOP PRESS: Eurosport, Sponsor's Day
- 5 Players Committee Report, Youth Report, Bar Burlblings
- 6 Catering, Chelmsford Sports Club
- 7 Kit News, Director of Coaching, Men's 1st XI Report
- 8 Ladies 1st XI Report
- 9 Sportswoman of the Year, Men's Chair of Selectors Report
- 10 Men's Team Reports
- 11 International Call-up Ladies Chair of Selectors Report
- 12 Ladies Team Reports, Mixed Hockey
- 13 Forthcoming Events
- 14 Golf Day Advert
- 15 Sponsor's Day Advert
- 16 Fundraising – 500 Club, Latest 500 Club Draw Results Letters to the Editors, Feedback
- 17 Sponsors Advert
- 18 Golf Day Entry Form
- 19 500 Club Standing Order Mandate

Newsletter Editors

David Wallbank
(davidawallbank@hotmail.com)
Adrian Tuff (atuff@tiscali.co.uk)
Nikki Tuff (nikkituff@tiscali.co.uk)

Chelmsford HC

NEWSLETTER

Welcome

Editors

Here we are at the beginning of a new and exciting season. It only seems like last week that a similar article was being prepared for the final Newsletter for the 2003/2004, whereas in fact it was back in May.

Your Management Committee have worked hard over the weeks leading up to the commencement of the season. This has included the reformation of the main committee, streamlining it so that sub committees report into a smaller unit. This is working and has drawn more members onto a committee environment. There is of course still more need for willing members to assist, rather than leave it to the few. All members should have a view on Club policies and the running of your Club so why not volunteer your services.

There is however one position that requires filling, and that is that of Facilities Manager – this will be someone who will manage the Club House and changing rooms etc during the hockey season.

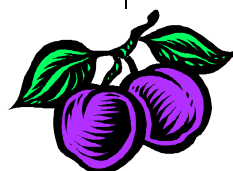
This summer has seen the running of a successful summer tournament again, the PLUM tournament which went very well indeed and the organisers have asked if it can be held at Chelmsford next year.

We missed out on holding the European Championships in 2005 to Cologne, however at least our Ladies will be contesting, and will hopefully win, which will put Chelmsford on the map for future occasions. We also understand that several (about 30/40) members attended Southgate HC annual August Bank Holiday mixed tournament, and captured "The Hill" much to the annoyance of the locals. We are led to understand that stories abound, but due to tour rules and a blocking of the subject by the sports governing body, we are forbidden to report further, sorry.

For those of you able to focus your eyes after a few after-match bebies, you may have noticed the significant improvements made to the bar, this was initiated by the Sports Club and notably the bar stewards from both CCC and CHC. Hopefully with your continued support over the bar further clubhouse improvements can be fulfilled.

By now several matches will have been played by all teams and with both 1st XI's contesting the Premier Divisions, it will make for some exciting encounters, these results will be duly reported in the team reports of which there are many!!!

From the editors may we wish you a very successful and enjoyable season.



Chairman's Chatter

Nigel King

No sooner does the season start and we have to look for the Christmas decorations ! Short and sweet to all of you out there from me this time :

- Don't treat your club like a public facility please. Some dedicated club members have to tidy up after us all so why not think about making their job easier ? Pick up the litter, empty the bins, leave the changing rooms tidy, help behind the bar etc etc etc – please don't wait to be asked again, it's all pretty obvious really.
- A good laugh had by those who attended the 1st XI Ladies Cocktail Night, thank you and well done. Notices will be going up to advise the forthcoming social events. Please make note in your diaries and do your best to support whatever takes your fancy.
- The Management Committee will be finalising the figures soon for the water based pitch and we shall know how much money still needs to be raised. I shall be bringing up to date the £20 pitch square appeal board in the next couple of weeks. This will then give you all a fairly close visual idea of how much money is still required.
- Peter Woodward is still delighted to receive more membership applications for the '500' Club.

- Please all make an effort to use your clubhouse and the bar. Bar usage recently has been good and as a result various improvements to our facilities have been possible. Probably next on the hit list – new furniture – if we drink enough !!

Enjoy the season.

Secretary's Corner

Spencer Wilcox

Season 2004/5 is now under way and presents a number of new challenges for us all. With both the men's and ladies in the EHL premier divisions bigger demands are being placed on us both from the playing and club infrastructure sides. But its already pleasing that Chelmsford, in the first round of scoring, has been acclaimed as the most hospitable club to visit - a credit to players, Nigel and Ian behind the bar and Terri our new caterer all of whom are doing a great job.

Some big changes have already been made this year to make the running of the club more efficient. And there is much more to do yet.

- we have appointed Terri Day as our new caterer, introduced strict cost controls and a ticketing system for after match meals.
- contract cleaners have been appointed to clean the new extension.
- Natalie Fulton as Director of Coaching for this season, already she is



making a difference to training sessions and the development of coaches

- struck a deal with the council to open/water the new pitch for outside hires during the week

And finally we have shaken up the old committee structure and below a much smaller management committee have introduced empowered sub committees to oversee playing, sponsorship, finance, membership, youth, Sports club and facilities. These changes are all intended to drive down responsibility and accountability to the right level and enable the Management Committee to take a more strategic longer term look at where we are going.

Taken together all these improvements are intended to put the club on a more professional basis, reduce reliance on a few hard pressed members and keep our costs controlled. The other side of the coin is that we are beginning to make our assets work for us and hires of the pitch are slowly increasing as more people become aware of how good it is.

But we have much more to do:

- more immediately, we must find someone to co-ordinate the facilities
- use and upkeep. Ideally we want a member with no other club job to pull all this together including, for example, appointing people to do repairs etc. This is an absolute must so

if you are interested please let me know.

- develop a new 5 year development plan which we will aim to do in draft over the next few weeks

So stacks going on and that's besides doing what we're here for - playing and enjoying our hockey!!

Membership details

If you have changed your address, contact details please let me know - a perennial problem for me to keep up with!

Email addresses

If you have an email address and not told me, then email me on spencer@wilcox51.fsnet.co.uk

On the other hand if you have told me of your email address and have not received any of the club emails sent out recently, can you check that your hotmail account isn't full; or that any changes to the address have been notified. If you use your office email, you might want to ensure that your firewalls aren't kicking out material sent to you. I do receive a lot of rejections form time to time, but it is impossible to find the time to check them all out!

Events coming up

Keep an eye on the social calendar:

- Whisky Night - Saturday 4th December (speak to Ian Hunter)
- Sponsors Day - Sunday 5th December when both 1st XI's have a double header against Canterbury

Pitch hire

All bookings for the water pitch are to be made through me. Contact email as above, or 01245 490946 or 07768 105184.

Crawf will continue to book additional slots on the sand for club events with Chelmsford Borough Council

Marketing, Finance and Sponsorship (MFS) News

David Lines & Helen McDonnell

It has been a busy few months for the MFS group, with some quite substantial achievements along the way. Foremost on the publicity side were the two TV features on the Ladies 1st XI - one on Anglia, the other on BBC Look East. Not only was it deserved recognition for a fantastic season last year, but it also put the whole Club in a very good light. Add to that features on radio and continuous good coverage in the local press, and you can see how well things have gone.

Much gratitude should go to Helen McDonnell for her tireless efforts in trying to get the Club into the publicity limelight. Not only is it good for our collective egos, but it also helps to attract new players, sponsors and, who knows, more spectators.

Helen's plans for the future include highlighting the historic clash between Chelmsford and Canterbury on December 5th

when, for the first time in EHL history, two Premier 1 clubs will field both Men's and Ladies teams against each other. We consider this an event which will attract the national as well as the regional media and we are using the day to showcase the Club and its facilities once more.

Looking into next year, Helen is trying to harness the attention of Eurosport, as well as that of regional stations, towards the Ladies two forays into Europe. As you can imagine, there is considerable expense to be undertaken to support these two campaigns and all publicity and support that be offered will greatly help.

This leads neatly onto the sponsorship side and, by the time you read this, everyone in the Club will have received a mini-brochure, detailing everything about the Club and outlining the various ways in which sponsors

can provide much needed support to our efforts.

Extra copies are always available, in addition to a 30 page colour brochure and a CD-Rom of the TV broadcasts. Whether it is through this or the 500

Club, there are so many ways in which you can help your Club and thereby help yourself. Please take time to read the brochure, if you haven't done so already, and see if there someone you know that you can introduce to us.

I am delighted to say there are already a few sponsorship prospects in the pipeline, one or two from household names. It is a bit premature to make any formal announcements, but what they illustrate is that a bit of time and effort will always pay dividends.



And please don't feel that this is all for the benefit of the top teams – they are, in truth, only part of the story. It is their success, but also the achievements of the teams under them that contributes to the overall success of the Club, creating the opportunities that we now enjoy in terms of two top class artificial pitches, a clubhouse that is being developed even further, with changing and other facilities which are far in excess of almost any club that I have played hockey at in the last XX years. So, in the end, this success, and therefore your continued efforts, benefits each and every member. When it comes to sponsorship, all you have to do is make an introduction and we can do the rest !!

Having said that, one other very simple thing you can do is to support the two senior sides when they are playing at Chelmer Park by coming along, preferably with guests, and watch. However, please make sure you buy a programme, especially as they take time, effort and money to produce. I hope you find the quality good and the contents informative, although there are more benefits than that. Not only do programme sales boost club funds, but it also means that advertisers are more likely to pay for space in the programme, adding further to club funds. Most important of all, being there and lending vociferous support is greatly valued by the players and management, and a good win always creates a great atmosphere in the Clubhouse afterwards.

Kit is another area we have been busy in, particularly that of after-match leisure wear. The consensus is that there should be

a coordinated approach to the whole matter. Not only does this create a common identity throughout the Club (although we would like to foster team or group identities as well) but it makes it a more commercially viable proposition for any supplier, which hopefully means better terms of business for the Club and its members.

We continue to work on that with representatives from each area of the Club and think that we can come up with a range of wear which will suits the pockets and taste of all segments of the Club. As this is a long-term strategy, please bear with us while we make sure we get it right ! Peter Hollebon has kindly agreed to act as the sole focal point for all kit, so management and club skippers, please note.

To sum up, like so many aspects of running the Club, what we do is a never-ending effort. It can be made all the more rewarding if club members also offer their help, as ultimately, it is for the benefit of us all. Whether it is introducing a sponsor, being part of a team that sells match programmes throughout the season or organising your team into fund-raising efforts, every contribution counts. Please let yours be amongst them.

STOP PRESS:
EUROSPORT to
visit Chelmsford!



It has just been announced that **EUROSPORT** are coming down to Chelmer Park on Saturday 13th November.

They will be at the Chelmsford Hockey Centre to film the Ladies 1st XI playing their EHL Premier League game against Olton and West Warwickshire and will also film some post match interviews with the players.

The more spectators the better on camera!

The game starts at 2pm so get yourself down to Chelmer Park on the 13th November and cheers on the Ladies 1's - you may even appear on national television!!

Sponsor's Day

Helen McDonnell

Chelmsford Hockey Centre will make history on Sunday 5th December at Chelmer Park when both the men's and ladies 1st XI's compete against Canterbury, the only other club to have both teams in the English Premier League, for the first time in the league's 16 year history.

The eagerly awaited contest will get underway with the Ladies 1s at 12pm taking on one of the hot favourites to win the Premiership title. The squad will be at full strength for this mouth watering match which brings together seven former and current England players with more than 600 caps between them. The event will also have a truly international flavour as three members of the South African Olympic Team who competed in Athens this Summer, Captain Susan Webbers, Jenny

Wilson (Canterbury) and Chelmsford's Natalie Fulton are also playing in this highlight of the first half of the season.

The Men's 1st XI match will start at 2pm on the same day.

Players Committee Report

Chris Randall

Unless you are excited by committee meetings and administration you may not realise that the Club's Playing Committee exists. In some ways that is a good sign, because Club members are only likely to want to raise items with the Playing Committee if they are unhappy about the playing side of the Club.

The Playing Committee consists of the chairs of selection, the fixture secretaries, the 1st XI managers, representatives of the Youth Section and the Director of Coaching. Our business so far this year has been dominated by the new tea arrangements, the future of the ladies 5th XI, and the role of the Director of Coaching. We have also talked about arrangements to ensure successful integration of youth players in senior teams and the use of the changing rooms.

The ladies 5th XI issue now seems to be resolved with Helen Alexander volunteering to take over the management of the team from Jenny Stonebank (who was in danger of becoming a call centre, permanently on the telephone!)

Natalie Fulton is now in place as Director of coaching and is developing her remit not only to do some active coaching in particular areas, but also to support and develop coaches throughout the Club and bring about better communication of what as a Club we should be trying to achieve in our players and our teams. She has held her first "coaches forum" to begin discussing what we want to achieve with all coaches and begin the process of coming to a common view on player development and principles which all teams can work towards in terms of effective play and winning matches.

Look out for more on this in future newsletters.

Youth Report

No Report was received from the youth section.

Bar Burlblings

Ian Hunter / Nigel King

The Bar Stewards thought it was about time that everybody understood how to change a barrel!

If there is no Lager/Cider coming through the tap.....

1. Check to see if barrel is empty.
2. If yes, change barrel. (If the barrel still had Lager/Cider in it follow steps 3,4 and 5). Turn off gas, lift trigger on valve on top of barrel, then twist valve off. Select new

barrel, twist valve on, and press down trigger, turn gas on.

3. Press valve (A) until vial is full.
4. Push up button (B) so ball goes to top of vial.
5. Open tap and Lager/Cider should flow, if not
6. Check dial to see if gas needs changing, if yes, empty gas bottle is between two red coolers (next door), turn off tightly, undo with spanner (on wall above coolers), select new bottle (behind first door into bar area), do up tightly, open tap and follow steps 3,4 and 5.

If there is no bitter coming through the pump.....

1. If the new barrel has already been tapped.
2. Put glass by vent (A), open to collect excess beer/release pressure.
3. Undo screw (B) on new barrel.
4. Undo screw (B) on old barrel.
5. Remove syphon pipe.
6. Put siphon pipe into new barrel until it reaches the bottom, and then lift it by 1 inch (2.5 cm).
7. Do up screw (B).
8. Leave vent (A) open
9. Pull beer through as normal
10. If the beer is the guest ale, change the pump clip and the blackboard details.

Catering

Crawford McKee

You will all by now have had the opportunity to meet Terri in the tea room kitchen, and have sampled her produce. I think we will all agree that her food both in variety and quality is really excellent and, backed up by her sparky personality, we have found a real winner. The success of the improved catering, added to the normal Chelmsford hospitality has pushed us to the top of the EHL rankings for hospitality this season to date, so well done to all.

We have been reviewing the new situation on a weekly basis both to ensure Terri has all she requires in the new kitchen and also to see that the organisation is running ok. As you know we have made some changes to the way we operate in providing food this season:

- we have introduced a ticket system to ensure that we have sufficient food and don't run short towards the end of the day. It allows us to ensure that those who should have food do get it, and also ensures that we have control of what our costs are. We must insist on a "no ticket no food" policy, unless the captain has had a problem in issuing the tickets. In such cases he/she should agree this with Terri beforehand on an exception basis.
- with our improved facilities in the tea room & tea room kitchen we are trying to make sure that we do all our post match eating there and keep the bar clear for drinking. We

need to eat as soon as we come through from showering, as Terri will have planned it accordingly, and will need to clear up for following games on a timely basis. (We have had one 8 game Saturday already this season!) Please ensure that your opposition know where the bar is and invite them through to stay for a drink after eating.

- we have also reviewed the numbers per team which we are catering for and have changed some of them. However we are agreed on the following catering numbers:
Mens & Ladies 1sts: 40 people.
Mens & Ladies 2nds: 30 people.
All other teams: 25 people.
- we have also taken into consideration spectators / visitors who may like hot food after travelling a distance. To that end Terri will put aside 30 meals to keep in stock which can be purchased for £3 per meal. It will also allow us to cater for any ad hoc vips who may visit us from time to time unplanned. In such cases the CHC host should buy them food from this stock and obtain re-imbursement from the Treasurer.
- tea and coffee is available in the tea room for anyone, without charge.
- I am sure Terri will appreciate any assistance in clearing dirty plates / cups back to the kitchen for washing up. Just like at home!

I trust you are all enjoying the new arrangements and can understand and accept our efforts to improve things does require some controls as well. We will

continue to listen to any well considered constructive points you may wish to discuss.

Chelmsford Sports Club

David Wallbank

We have had quite a busy few weeks recently, namely undertaking the refurbishment of the bar. To our great delight all of the work undertaken has been well received. All that remains is the installation of the new bar top which we hope will be fitted soon.

This undertaking has only been possible with the hard work of several committee members and the bar stewards of both the Cricket and Hockey clubs. And to those we offer a huge vote of thanks.

You will also see one or two other changes soon. As a result of the committee's suggestion, and with the approval of both CCC and CHC, the screen which has in the past served as a screening to form a committee room will be removed. This should improve the appearance of the Clubhouse.

Also the bar billiards table which has graced the Clubhouse for the past three years is to be removed. The table was on free loan from Essex Leisure for a trial period of 6 months. Three years later, we still have it, and they want it back. We have looked into the finance of renting or even buying, and we are not taking enough to warrant its existence. Sorry to those who enjoy the odd game. As a result of our findings and in the knowledge of future funding

of Clubhouse refurbishment, we have decided to return the table to Essex Leisure with our thanks for its use over the past years, and to possibly review the requisition of a table in the future when funds are available.

Kit News - *The Hockey Guys*

Peter Hollebon

Club Kit

Have you got the Kookaburra kit yet?

Shirts -£25

Shorts -£12

Socks - £6

Tracksuit Tops - £35

Tracksuit Bottoms - £20

Shirts, shorts and socks are stock items. Tracksuits to order please.

Astro's

I now stock Dita, Gryphon, & Addidas at prices way below local Sports Shops. Check it out.....

Sticks

See the fantastic new Dita Compo range. Admire the Gryphon Elan & Aussie sticks and wonder at the "sweet spot".....

Feel the quality of the Mercian range (they even have straight ones ??????) and check out the superb balance.

Plus

Grips (including chamois), stick tape, left hand gloves (full, half and knuckle protectors), shin pads (including Anatomica hard shell), Addidas drink bottles, assorted balls etc etc

See me in the Clubhouse on Saturday afternoons or Sunday mornings 9-12.

Ring me to find out when I will be there.

Tel. Home 01245-420862

Mob. 07939-047697

Director of Coaching

Some club members may not be aware that Chelmsford Hockey Club have a (new) Director of Coaching: Ladies 1st XI Player and South African Olympiad Natalie Fulton

Although it is too early in the season to detail the improvements made to the coaching system, from the 2nd XI through the club sides and down to the youth section, we felt it was important that you were aware of the aims and objectives of our Director of Coaching.

The aims below are taken from the original job "specification":

- **To develop a coaching style and structure** that can be used throughout the club and manipulated according to the strengths and weaknesses of the individuals within teams so as to maximise performance of that team.
- **To work closely with the youth of Chelmsford** in an attempt to establish a close link between the junior and senior squads in the club and create a consistency with development of players, trying to minimize the loss of any talent that we have in the club.

- **To create targets and goals for teams** that ultimately measures the clubs success.
- To compile a **working document** that will document all the information worked through during the season identifying pros, cons and ideas for progression in the following season.

Men's First XI Report

David Hunter

Last season.....what a season!! The Men's 1st XI got promoted to Premier League for the first time in their history, by finishing second in Division 1.

So what's changed from last year? To keep it brief:

Players Out: Olly Cooper (Hampstead & Westminster), James Davies and Mark Oelofse (both returning to SA), Dan Tilley (moved south for work) and Chris Broom (returned to Oz).

Players In: Gareth Carr (from SA), Jason Tomlinson (Bowdon/Oz), Phil Sully (Cannock), Adrian Kimber (Southgate). Familiar faces returning to the club included Adam Hunter (Loughborough Students), Willy Hales (Birmingham University), Carl Wright (Southgate) and Rob McKay (Cannock).

Management: Craig Fulton, David Kitchiner and Peter Woodward still form the coach and management role, but have a new captain in David Hunter (replacing the retired Spesh), and vice captain David De Prez.

After two months of pre season training we eagerly went into the league campaign looking to continue our promising form in the friendlies we had shown.

League season so far:

P 5 W 1 D1 L3 F12 A16

Position 9th (out of 12)

vs Reading (A) Lost 1-3 (De Prez) Most Valuable Player - Kimber. Showed Reading we can play, and came off the pitch with spirits high.

vs Loughborough (H) Lost 3-5 (De Prez 2, Carr) MVP Tomlinson. Should have done better, as Loughboro showed their Prem experience to beat us

vs Firebrands (H) Lost 3-4 (Carr, De Prez, Fulton) MVP Hales. Most disappointing performance all season. 3-2 up, and threw it away

vs Hampstead and Westminster (H) Won 3-2 (Sully 2, Carr) MVP Sully. First win in Premier League! Great effort physically and mentally by all.

vs Surbiton (A) Drew 2-2 (Wilcox, Farmer) MVP Hunter. A performance against a top side which deserved more than a point.

Cup vs Chichester (H) Won 5-2 (Carr 3, Fell, Fulton) MVP No one! 2-0 up in 2 mins. Dreadful performance. No one played well. Still through to next round though (vs Beeston).

With certain relegation for 11th and 12th, and the possibility of 9th and 10th going down as well, all is to play for this season. The team have aimed to finish top 6. Although lying in 9th at the moment, we still need to play alot of the "weaker" sides in the

league, so will be aiming to propel ourselves up the table before Christmas

On a more light hearted note. We have started a weekly fines session. Although the majority of fines involve people turning up late, and not wearing correct attire, we do have extras for stupid things done that week, e.g. falling over with no one near you, putting the ball over the fence etc. If you notice any fineable offences, speak up so we can humiliate that individual (and boost our end of season drinks kitty).

**SATURDAY 18TH
DECEMBER - CLUB XMAS
PARTY.** Keep an eye out for posters around the club for this years theme etc. Following last years Santa & Surf theme the Men's 1's will be organising this years party, so watch out!!!

Ladies First XI Report

Janet Sutton

CHELMSFORD LEAD THE PREMIER LEAGUE

As at the beginning of November Chelmsford head the Womens Premier 1 League . Having played an extra match (due to the rearranged Hightown match from 27th Feb) they are one point clear of Canterbury, Slough and Ipswich.

P6 W4 D1 L1 Pts 13

The Cup run has started with a convincing 10-0 win against South Premier side, Epsom (GK Katie Roberts scoring a field goal in her annual run out in a skirt!).

Round three due on 7th November away v. Wimbledon, will be more of a challenge as they head Premier Division 2.

Chelmsford have strengthened the 1st XI Squad this season in preparation for their double foray into Europe. Olympiad, Nat Fulton returns from South Africa, Sarah Wilcox and Vicky Hutley return from University. New additions are Irish U21 , Emer Harte transferring from Hounslow & Ealing and Barbadian International, Patrina Braithwaite has come to England to study at London Metropole University. For those wondering where is Tam? She has re-registered and will be back after her medical exams at the end of November.

Several promising youngsters have registered for the 1st XI and we hope to give them pitch time during the season.

On the International front, Lisa Wooding and Chloe Rogers have been representing England in Germany. Katie is taking time out from International duties, as she has started her career in 'Chambers'.



The team are busy fund raising for Europe and thank you to all who supported the cocktail evening - we raised £471 (with donations of drink from the 1st XI squad) - we hope to plan another this season and various other fund raising events.

We would like as many of you as possible to come and support at either the Indoor in Zurich or

Outdoor in Cologne (OR BOTH !!!!) and see details of the dates and times in this newsletter. We really need a **SUPPORTERS CO-ORDINATOR** - any volunteers please. I can then send details as they come in to a central person, who can disseminate .

Sportswoman of the Year

Natalie Fulton, Chelmsford Hockey Centre's newly appointed Director of Coaching has been awarded the prestigious 2004 Sports Woman of the Year Award by the University of Pretoria in South Africa.

The 27 year old South African had made the 5,000 mile trip back to the UK to start her new role at Chelmsford Hockey Centre following a punishing Summer at the Olympics when she got a call from the university to notify her of the award. In a moment of "déjà vu", Fulton flew back to South Africa, courtesy of the university to collect her award from the South African Deputy Minister of Sport. The gala evening reunited many of the South African Olympians who had competed in Athens.

Natalie has had an outstanding year in South African hockey. She won a gold medal in the Pre-Olympian Four Nations Event in Athens and she qualified for the Olympic Team which finished ninth in Athens, improving on their tenth position in Sydney.

Elsewhere, in her day to day job as Hockey Manager for the University of Pretoria over the past year Natalie has overseen

close on 1,000 players of all ages ensuring quality coaching of modern techniques to maximise each person's individual skills and goals within the game.

She was taken by surprise with the call from Pretoria but was delighted with the award and commented: "The award was a total surprise and I'm extremely proud to have even been considered for it let alone win it. It is a great honour".

Men's Chair of Selectors Report

Adrian Tuff

The season kicked off with a club training-cum-selection event. This was the first time we had tried anything like this and it seemed a reasonable success. There were about 35 players from (mainly) the 3's to 6's and the youth section. The aim was to start from a new slate and assign players to teams based on their ability rather than the team they played for last season.

Due to the increasingly productive partnership between ourselves and Felsted school it was a pleasure to see half a dozen or so eager youngsters keen on venturing in to adult hockey. Most of whom who have been playing regularly for the adult sides, ranging from the 2's to the 6's.

Following on from the selection event it has been a good start to the season for our "club" sides and a reasonable start for our top 2 teams.

The Men's 1st XI were always going to find it tough in the Premier League but with 5 games gone they find themselves 9th and with a win over a strong Hampstead and Westminster team under their belt. You will have already read more about their "exploits!" in their season report that appeared above.

The Men's 2nd XI have also gained some good results to leave them currently lying 8th in Premier A with a game in hand over the teams around them.

For the other league sides, namely the 3's-6's, generally things could not be going much better. The 3's and 5's remain unbeaten, the 4's and 6's have only lost once and are in the running for the top spot.

The Evergreen's seem to be enjoying themselves! They have pretty much managed to get friendlies scheduled for each week and have already recorded some emphatic wins along with a few closely contested losses!

The Vets team this year have become part of a local(ish!) league set up by our own Welsh international, Ralph Thomas. They have a mixture of friendlies and league matches and have so far recorded a mixture of draws and losses.

It has been a good year for new members. Obviously our 1st XI have some new signings (including the obligatory South African!), but with Felsted students, returning ex-students (and their friends) and new people moving to the area we can probably host somewhere in the region of a 20 or so new members spread right throughout the club.

If our teams can maintain their results throughout the season we may well be looking at one of the most successful Men's club seasons in recent years, but of course we are only a quarter of the way through the season and things change!

If you have any issues concerning selection or any general playign issues then please feel free to talk them through with you captain or myself.

Men's Team Reports

Royce Waters (Men's 2nd XI)

The 2nd XI didn't want to shout about their achievements so far so you'll have to wait until the next newsletter (January) to hear how they have been getting on.

Derek Gould (Men's 3rd XI)

No Report was received from the Men's 3rd XI.

Tom Dalton (Men's 4th XI)

Where no Men's 4th's have gone before...

It's new territory this season for the men's 4th XI, who, after their (almost) all-conquering 03/04 season, are now upping the pace in division 5SE. Shorn of their free-scoring strike force of last season, it was a new-look team who stepped out at the end of September against a well-drilled Redbridge & Ilford side. A slight half-time lead turned into a 4-2 defeat as the opponents slowly

turned the screw, but a good first performance meant that a spirited team went into the next match against the then league-leaders Sudbury, fresh from an 8-1 victory the week before.

Torrential rain eventually proved to be the more effective opponent as Chelmsford handed out a 7-1 thrashing, highlighted by a superb second-half performance in all areas of the pitch. Second in the league going into week three, an undefeated Brentwood provided the opposition, going a goal ahead early on. But some excellent attacking on the break put Chelmsford into a 4-1 half-time lead, and some equally effective defending in the second half allowed Chelmsford to come out 4-2 winners, consolidating second place in the table.

And then the big clash with league leaders Southend, boasting a 100% record and having conceded only 4 goals so far. An entertaining and hard-fought game resulted in action at both ends, numerous cards and a creditable 5-5 draw. Highlights must include a superb hat-trick by Tufty and a penalty flick saved by Ben Wallace.

Last season's fellow promotees Waltham Forest provided the next opposition, and having not beaten them in 2003/04, Chelmsford had a good idea of their capabilities. However, the ever more effective Chelmsford attack went on to hit double figures in a well-earned 10-2 victory, including four goals by Will Stock.

So far so good, with Chelmsford 4s holding 2nd place.

Jon Lambert (Men's 5th XI)

Five wins out of five finds the 5XI first!
P5 W5 D0 L0 GF31 GA7 Pts15

The squad has remained largely unchanged for last season, except up front where Richard Lines and Richard Nourse have replaced Will Stock and Matt Nicks who have moved up to the 4XI. The difference this season is that we've been able to put virtually the same side out each week, resulting in an unusual solidity at the back and a new found understanding between the halves. A particular mention should go to Richard Lines and Roy Gemmill with 8 goals each.

It's early days and we have some much tougher games ahead, but we've shown that we have the ability and the team spirit to hold our own this season. Watch this space.

Tim Burrows (Men's 6th XI)

The Men's 6th's thought it was too early in the season to let you know how they are getting on!

Fred Matthews (Evergreens)

The season has started brightly with 4 wins and 2 narrow defeats in our opening games.

The season started with a hard fought 6-4 win over Bishpos Stortford and has seen further wins over Berkhamsted (10-2 with David Simms scoring 5 goals whilst moving about 10 metres in total from the left post to get all 5), Southgate Magnums (5-2) and Braintree 4's (6-5).

Narrow 2-1 losses to Enfield and Sutton Valance which both were close enough to have gone either way has made this one of the best starts to the season in recent years.

The whole side has made contributions during the games in one way or another and we are looking to continue the season both recording more wins and continuing the very social side to our games mixing with our opponents before and after games.

The Evergreens may have a combined age of 733 for most matches but we doubt if there is any side in the club who enjoy their Hockey as much as we do and long may it continue.

Ralph Thomas (Vets)

With 5 games played we have fielded 11 adults just once, so a win has been beyond us. We have had just one match in the new East East Veterans League, a 1-1 draw with Ipswich.

We are pleased to welcome 2 newcomers, Nigel Seager and Will Williams both of whom have shown they are comfortable in veterans hockey.

Thanks are extended to Richard Carter, Jack Moss and Richard Stubbings who have turned out for us at short notice, thereby ensuring some competitive and enjoyable matches.

International Call-up

Dear Chelmsford Hockey Club,

I write to advise you that Ralph Thomas has this past weekend represented Wales Veterans over 50's as Captain of the Over 50's Squad at the annual 4 Nations Veterans International Tournament this year held at Cannock. I would hope that as a club you would congratulate Ralph on representing his country yet again.

Full details of the event can be found on www.thecooks.wyenet.co.uk under the banner advert or Veterans Hockey.

Yours in sport,
Bernie Wheeler.
Hon Sec Welsh Hockey Veterans.

Congratulations Ralph!



Ladies Chair of Selectors Report

Jenny Stonebank

It has been a reasonably good start to the season especially for the higher XI's.

The 1st XI have a strong squad going into this season's busy campaign and have already recorded some excellent results (apart from the blip against local rivals Ipswich!)

The 2nd XI have bounced straight back into the East premiership and have made a very good start. They already have a greater points tally than 2 seasons ago when they were demoted from the division.

At the time of writing the 3rd XI topped their division, Essex division 1, on goal difference following a 1-0 win over Southend, youngster Charlotte Roberts grabbing the all important goal.

Finally the 4th XI appear to be getting a settled side after a start to the season that was plagued with unavailabilities and it looks like we will be able to continue to run a 5th XI following the recruitment of a number of talented youngsters from the Youth section.

All this is only possible thanks to all the people who volunteer to help. So when you turn up to play on a Saturday please think about all the things the captains have to do; filling in team sheets, collecting money, sorting out availability, the fantasy league, meal tickets, umpires, the changing rooms, the pitch and please please offer to help.

Finally thank you to everyone who has umpired so far this season for the Ladies it is much appreciated.

I am also pleased to report that the changes in the teas this season have been well received.

Ladies Team Reports

Claire Penketh (Ladies 2nd XI)

We've had an unexpectedly good start to the season having just been promoted back into the East Premier Division.

We started the season with the objective of finishing mid table and assuring we stayed in the division this year. So far we've had 4 wins and 2 losses leaving us 4th and giving us a real prospect of finishing in the top third of the table.

With continued consistency from Kat Letts, Emma Cockerill and Julia Butterworth we can expect to continue the season as we've started and hope that recent form can continue.

We also wish all the best to Anna Smith, who has been ill recently, and also for a speedy recovery.

Sally Symes (Ladies 3rd XI)

The Ladies 3's have had an excellent start to the season and are sitting at the top of the league after 5 games.

Our only slip up so far was the first game of the season against Brentwood who, at 2nd from bottom is the only game they have won!

Clearly a side we should have beaten. We have however beaten 2nd place Basildon who are behind us on goal difference but we will have 3 tough games ahead against Havering, Thurrock and Old Loughts who are lurking just below us in the table.

We have lost a couple of players to the 2's this year but have had great some new additions to the team who have fitted in really well and are making a real impact.

Charlotte and Helena Roberts have already claimed player of the match awards as has Helen Fagg who has been fantastic in goal and is helping to keep our goal difference at the highest in the league. Mindy Baillie has also joined us from the U.S. who along with Charlotte is contributing well to our goal tally.

Let's keep up the good performance!

Jenny Stonebank (Ladies 4th XI)

The 4th XI had a pretty bad start to the season losing the first 3 games by fairly high margins. The team changed from week to week and it took a few games before the side started to settle and play with some structure. This was reflected in their next game when some solid defending and good movement with the ball led to two early goals being scored. The final result against Essex University of 3-1 recorded the 4's first and deserved victory. Crostyx 2nd XI were their next opposition. Although they had a strong side the 4's were unlucky not to take all the points and had to settle with a 2-2 draw at the final whistle. It has been encouraging to see the younger players come into and play well for the fourth eleven.

Jenny Stonebank (Ladies 5th XI)

It has been a difficult so far this season getting the 5th XI off the ground. So many players have been unavailable week in week out that the 5th XI have suffered as a result of losing players to the higher XI's. Already 2 games have had to be cancelled.

In the 2 games played the 5th XI experienced a heavy loss against a very strong Waltham Forest side and then narrowly lost to Harlow 2-0. The signs are encouraging for a more settled side with some new young players joining and playing alongside some of the more experienced players.

Mixed Hockey

A couple of changes this season, firstly Emma Cockerill has taken over as mixed captain and secondly, we have entered a team into the Essex Mixed League (Division 2 East).

The first league game was against Old de Ferrians, a fine performance saw the team, consisting of Men's 2's through to Men's 5's and Ladies 2's and Ladies 3's players, record a resounding 9v0 victory.

Mixed Game Fixtures:

21st Nov - Southend (H - Lge)
T.B.C. - Havering (A - Lge)
16th Jan - Old de Ferrians (H - Lge)
30th January - Crostyx (A - Cup)
13th Feb - Southend (A - Lge)
20th Feb - Cup Round two
27th Feb - Havering (H - Lge)

If you are interested in playing then email the Emma on mixed@chelmsfordhc.org.uk

Forthcoming Events

Saturday 13th November - EUROSPORT visit Chelmer Park to film the Ladies 1's vs Olton (2pm)

Saturday 4th December - Whisky Night (speak to Ian Hunter)

Sunday 5th December - Sponsor's Day

Both of the Men's and Ladies' 1st XI's are playing home EHL league matches against Canterbury. (see advert)

Saturday 18th December - CLUB XMAS PARTY.

Keep an eye out for posters around the club for this years theme etc. Following last years Santa & Surf theme the Men's 1's will be organising this years party, so watch out!!!

Friday 21st January – Sunday 23rd January 2005- Annual Beer Festival

Friday 25th – Sunday 27th February 2005 - European Indoor Tournament (Ladies 1st XI)

Venue :- HC Rotweiss Wettingen, Sportstr. 11, 5430 Wettingen, Switzerland

Pools :-

A	B
Ara La Gantiose (BEL)	Chelmsford HC (ENG)
Maryino Moscow (RUS)	Club de Campo (ESP)
HC Rotweiss Wettingen (SUI)	Valhalla LHC (SWE)
HK Zrinjevac (CRO)	GDS Cascais (POR)

Travel :- Team LHR /ZRH Thursday 09.10hrs – return ZRH/LHR Sunday 20.15hrs

Players:- Named squad in January of 18 (inc. 3 goalkeepers)
Named squad at Tournament of 12 (inc. 2 goalkeepers)

Friday 25th March – Monday 28th March 2005 - European Outdoor Tournament (Ladies 1st XI)

Venue :- KHTC Stadion Rot-Weiss Koln, Olympiaweg, 50933 Koln, Germany

Pools :-

A	B
Amsterdam HC (NED)	Chelmsford HC (ENG)
KHTC Rot-Weiss (GER)	Glasgow Western (SCOT)
CPCS Moscow Prada (RUS)	Dinamo Sumcharka (UKR)
Cambrai HC (FRA)	La Gantoise HC (BEL)

Travel :- By coach / ferry
Leave CP Wednesday 23rd March 18.00 hrs – TBC
Return Monday 28th March evening

Players:- Named squad in January of 24 players (inc. 3 goalkeepers)
Named squad at Tournament of 18 players (inc. 2 gk's) of which 16 players to be named for each match

Monday 16th May 2005 - Golf Day, Channels Golf Club (see advert)

Golf Day Advert

CHELMSFORD HOCKEY CLUB



MONDAY 16th MAY 2005

CHANNELS GOLF CLUB
LITTLE WALTHAM, CHELMSFORD

Cost. - Approximately £60 (same as the past two years) for the day that will include coffee on arrival, lunch and evening meal. Two rounds of golf over 27 holes.

All profits will go to the Club.

To ensure your place or that of your team, would you please contact or submit an entry form which can be found in all issues of the Clubs Newsletter or behind the bar, to either Ben or Ursula without delay.

Ben Farmer,
43 Lawling Avenue, Heybridge, Essex, CM9 4YT

(H) 01621 855826 (M) 07977 539963

e.mail: ben.farmer@tiscali.co.uk

Ursula Heelis,
18 Whitehouse Crescent Great Baddow, Chelmsford,
Essex CM2 7LP

(H) 01245 351615 (M) 07909 994384

e.mail: ursula@uheelis.freemove.co.uk

Sponsor's Day Advert



English Hockey League

Ladies and Men
Premier 1

EHL DOUBLE-HEADER

Chelmsford

V

Canterbury

Ladies @ 12.00 p.m. Men @ 2.00 p.m.

Sunday 5th December

The Chelmsford Hockey Centre
Chelmer Park, Beehive Lane, Galleywood, CM2 8RL

Fundraising - 500 Club

Peter Woodward

I have recently written to all those people who supported the Club during our fund-raising for the new project, to ask if they would continue supporting by taking out membership to the 500 Plus Club. The response has been quite encouraging so far. BUT, as usual, it is the same people who took out covenants and donated sums of money, who carry on support. By Christmas, I would like to have "300" Members!

Why can't every club member, young or old, join up? It costs an equivalent of ½ pint of beer a week or a coke and a mars bar. PLUS, you have a chance to win large cash prizes.

There is a standing order mandate at the back of this newsletter.

We are about to have our 37th Draw, since I took over and we have given out, in the region of £13,000 !!

Not to be sniffed at!

JOIN UP NOW

Latest 500 Club Draw Results

Peter Woodward

September 2004 195 qualifying members

Prize	%	Amount	"Winners"
1st Prize	12%	£117.00	C.J. Gulliford
2nd Prize	8%	£78.00	Ian Brown

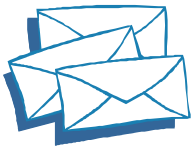
3rd Prize 4% £39.00 Alan Ball

4th Prize 2% £19.50
Emma King, Andrew Kennedy, D.A. Carr,
Mrs. P. Woodward, C.D. Chalk, E.A. Meer.

Letters to the Editors

If you have any burning issues that you feel you want to convey to the rest of the club and/or management officials, but do not know the best way to do it, why not write a Letter to the Editors?

All letters will be treated with the utmost importance and in the strictest of confidence (if necessary!).



We are awaiting your input.

Feedback

Along with any Letters to the Editors that you feel you may want to write, now that you've had a chance to read it through, do you have any ideas concerning the Newsletter? All feedback gratefully received.

You can either accost one of the Editors in the clubhouse, email them your ideas (email addresses are on the first page) or snail mail your ideas to the Tuffs:

**57 Sheppard Drive,
Chelmsford,
Essex,
CM2 6QE**

Sponsors Advert

Treasury Consulting Lines

www.TreasuryConsultingLines.co.uk

Sponsors of Chelmsford Hockey Club

Treasury Consulting Lines

- Specialist training in global financial markets
- Consulting expertise in Treasury and Financial Risk Management
- Author of the **CODE** © (Consulting On-line for Directors and Executives) Treasury and Risk Management coaching product

Galleon Chambers, 3 Connaught Avenue, Frinton-on-Sea, CO13 9PN
Phone : + 44 (0)1255 677177 Fax: +44 (0)1255 852460
E-Mail: consulting434@aol.com

Golf Day Entry Form

CHELMSFORD HOCKEY CLUB

GOLF DAY - MONDAY 16th MAY 2005

CHANNELS GOLF CLUB, LITTLE WALTHAM, CHELMSFORD

Programme

Coffee on arrival 9.00am followed by - 9 Holes - *Belsteads Course* – Texas Scramble, Team Prize

Lunch 12.30pm followed by -18 Holes – *Channels Course* – Stableford, Individual & Team Prize
+ Longest Drive & Nearest the Pin.

Three Course Dinner, (Gentlemen jacket & tie please) followed by an award ceremony and raffle.

Cost approximately £60 pp. This will depend a lot on the number of entrants and the deal we can make. Sponsorship of prizes would be appreciated.

Remember this is a fund raising event with all profits going to the Club.

CHELMSFORD HOCKEY CLUB

GOLF DAY – MONDAY 16th MAY 2005

CHANNELS GOLF CLUB, LITTLE WALTHAM, CHELMSFORD

ENTRY FORM

The organisers need to know the number of competitors by the 27th March 2005. Please submit this form with your team or phone either Ben or Ursula

Name: Handicap:

Name: Handicap:

Name: Handicap:

Name: Handicap:

Please enter my name or team for the above Golf day.

Signed:

A deposit of £20 per player with your entry form will be required by the end of March

Ben Farmer, 43 Lawling Avenue, Heybridge,
Essex, CM9 4YT.
(H) 01621 855826 (M) 07977 539963
e-mail: ben.farmer@tiscali.co.uk

Ursula Heelis, 18 Whitehouse Crescent
Great Baddow, Chelmsford, Essex, CM2 7LP
(H) 01245 351615 (M) 07909 994384
e-mail: ursula@uheelis.freemove.co.uk

500 Club Standing Order Mandate

Please pay: -

LLOYDS BANK PLC CHELMSFORD BRANCH SORT CODE 30-91-85

TO THE CREDIT OF: -

CHELMSFORD HOCKEY CLUB ACCOUNT NO 0997023

The sum of £.....

Amount in words.....
(Minimum £5-00 per month)

Commencing And on the 7th day of every month

Account to be debited:-

Your name.....

Your Bank's Title.....

Your Bank code.....

Your account number.....

Your Banks Address.....

Signature (s).....

Date.....

Please return the form to: -

Peter D Woodward,
Torc Cottage,
3 Garden End,
Stock,
Ingatestone,
Essex
CM4 9LD.

You may copy this to pass on to other prospective members.